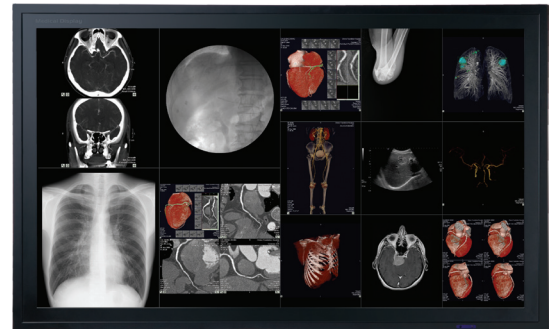




# 56" 8 Megapixel QFHD Medical Display

Optik View®

Optik View's 8 Megapixel 56" medical monitor is the ideal choice for reproduction of multiple images concurrently in the operating room. This vivid, precise, display delivers consistently uniform images that can be scaled and maneuvered to highlight the most immediately vital picture and minimize the less important. With a native resolution of 3840x2160, it is unsurpassed in clarity and our Automatic Luminance Stabilization system assures that it will remain so. The combination of QFHD monitor and MDM / KVM video processors deliver the stability and reliability of a custom engineered hardware solution suitable for Medical Applications such as Hybrid Operating Room, EP Labs, Cath Lab, and for any process where monitoring must be constant where control must be precise.



Model Name		DC802
LCD Panel	Type	TFT color, active matrix
	Native Resolution	3840 x 2160 Landscape
	Active Screen Size	56 inches diagonal
	Display Area	1244 (H) x 699 (V) mm
	Pixel Pitch	0.108 mm x 0.324 mm
	Viewing Angle	176 degrees (H) / 176 degrees (V)
	Response Rate	6.5 ms gray-gray (average)
Visual Characteristics	Brightness	450 cd/m <sup>2</sup> (Max)
	Contrast Ratio	1200:1 (Max)
	Display Colors	1G Colors 100% NTSC Gamut
I/O Interface	Input Terminal	(DVI-D) x 4 (1920x1080 each)
	Input Signals	Digital: DVI
	Service Interface	RS-232 D-Sub 9-pin mini x 1
	USB Hub	USB Rev. 2.0, upstream x 1, downstream x 2 (Optional)
Features	Gamma Preset	2.2, 2.4, 2.6, DICOM, User
	Color Temperature Preset	5400K, 6500K, 7500K, 9300K, User
Power Requirements	Power Supply	AC 100-240V, 50 ~ 60 Hz
	Power Consumption	500 watts
Physical characteristics	Dimensions (W x H x D)	Unpacked with stand: 1345 x 866.4 x 299.2 (mm)
		Unpacked without stand: 1345 x 800.8 x 139.3 (mm)
	Weight	Unpacked with stand: 73 kg
		Unpacked without stand: 68 kg
	VESA Mounting	VESA 600 X 400 mm
Environmental	Operating Temperature	+5°C to + 35°C (32°F to 95°F)
	Operating Humidity	30% to 75%
Others	Certification and Compliance	cTÜVus (UL 60601-1, CAN/CSA C22.2 No. 60601-1), CB (IEC 60601-1), TUV/RH (EN 60601-1), FCC, CE, VCCI, RoHS, WEEE
	Supplied Accessories	AC power cord, DVI-D to DVI-D cable, user's manual (CD-ROM) , warranty card

